

## ShineWiLan-X2 Configuration Guide

For the latest information, please visit <http://server.growatt.com>.  
 T 400-931-3122 F +86 755 2747 2131  
 E [service@ginverter.com](mailto:service@ginverter.com) W [www.growatt.com](http://www.growatt.com)

### Step 1. Turn on the PV device and check the connection status

Upon initial installation, the indicator on the ShineWiLan-X2 will be steady blue, indicating that Bluetooth has been enabled.

#### LED status indication

LED status	Operating status
Off	The datalogger failed to communicate with the PV device. (1) Check if the datalogger has been properly connected to the USB port on the PV device; (2) Unplug and replug the datalogger; (3) Connect the datalogger to another PV device to check whether the datalogger or the PV device is faulty.
Steady white	The datalogger is initializing. Please wait for about one minute.
Steady blue	The datalogger is in Bluetooth mode. Please continue with the network configuration process. If you do not need to configure the network, you can exit this mode by pressing the button once.

### Step 2. Download the ShinePhone APP

Scan the QR code below to download the ShinePhone APP, or you can search for ShinePhone in the Apple Store or Google Play to download and install the APP.

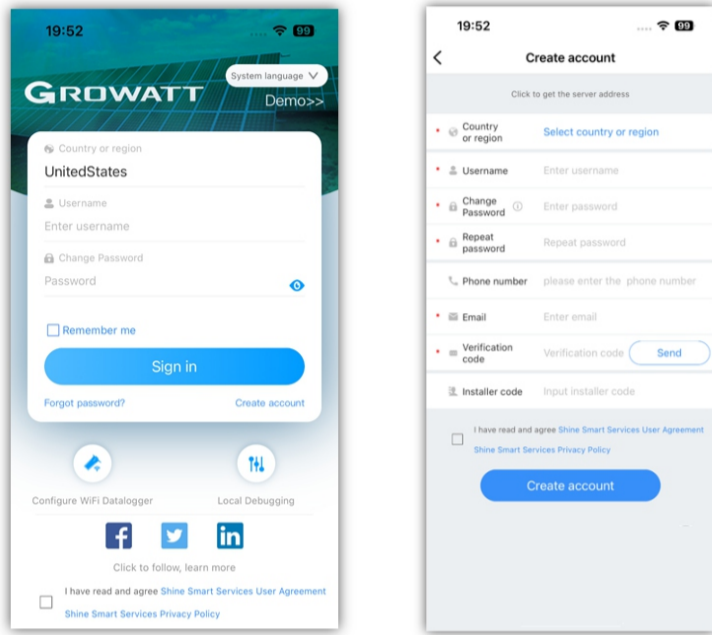
1. Make sure you download the latest version.
2. For further information, please visit <http://server.growatt.com>.



【Android & iOS】

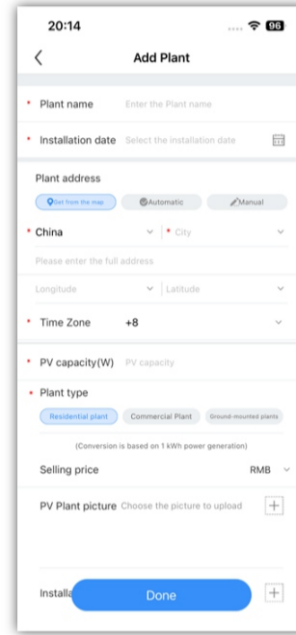
### Step 3. Register an account

1. Connect your phone to the router via a wireless network;
2. Run the ShinePhone APP and go to the registration page;
3. Fill in the registration information and click "Create account".



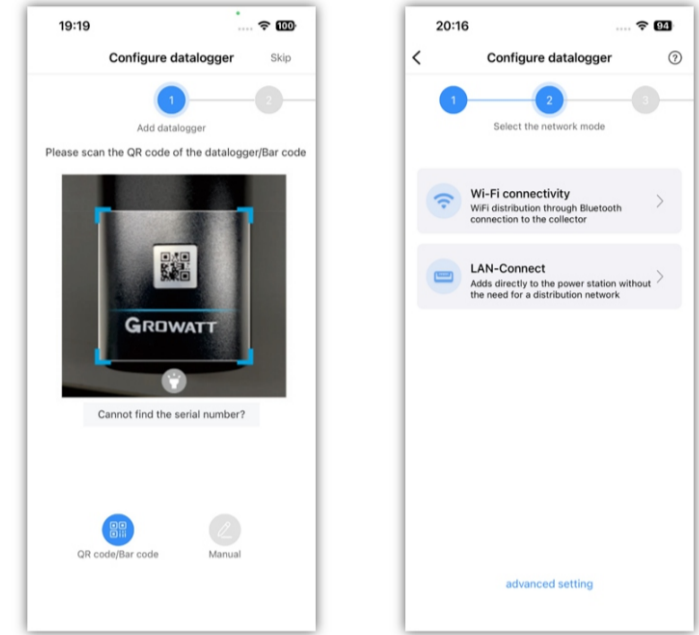
### Step 4. Add a plant

1. Go to the "Add plant" page;
2. Fill in the plant information;
3. Click "Done" to add the plant.



### Step 5. Add a datalogger

1. Go to the "Add datalogger" page;
2. Scan the QR code or manually enter the serial number (SN) and verification code;
3. If you select "LAN-Connect", the datalogger will be added directly. If "Wi-Fi Connectivity" is selected, you need to configure the network to add the datalogger;
4. If you do not need to add a datalogger, you can skip this step and go to the "Plant" page.



### Step 6. Network mode configuration

#### 1. Connect via Wi-Fi

Configure the datalogger

Step 01: On the target Plant page, tap "+" to add the datalogger  
 Step 02: Scan the QR code or manually enter the serial number (SN) and verification code

Select "Wi-FiConnectivity"

Step 01: Select "Wi-Fi Connectivity" to enter Bluetooth mode  
 Step 02: If the indicator on the datalogger is steady blue, it indicates that Bluetooth has been enabled. In case that Bluetooth is off, please short press the button to turn it on and continue with the network configuration

Datalogger configuration starts and it will automatically connect to the Bluetooth with the name of the datalogger's SN

Datalogger firmware upgrade (only perform this step when a firmware update is required)

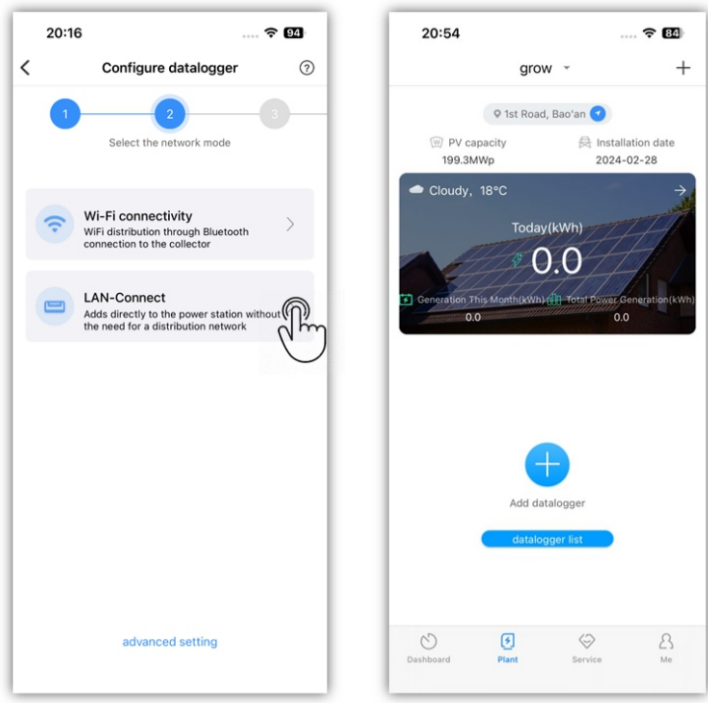
Step 01: Choose whether to upgrade the datalogger version  
 Step 02: If you need to upgrade the datalogger, please wait for about 10 minutes. The datalogger will restart automatically once the upgrade is complete  
 Step 03: Reconnect to the datalogger's Bluetooth

Connect to the home router and configure the network

Step 01: After the Bluetooth connection is set up, enter the configuration page, select your target router and enter the password  
 Step 02: Once the WiFi configuration is complete, please return to the "Plant" page

Configuration is successful, then return to the "Plant" page

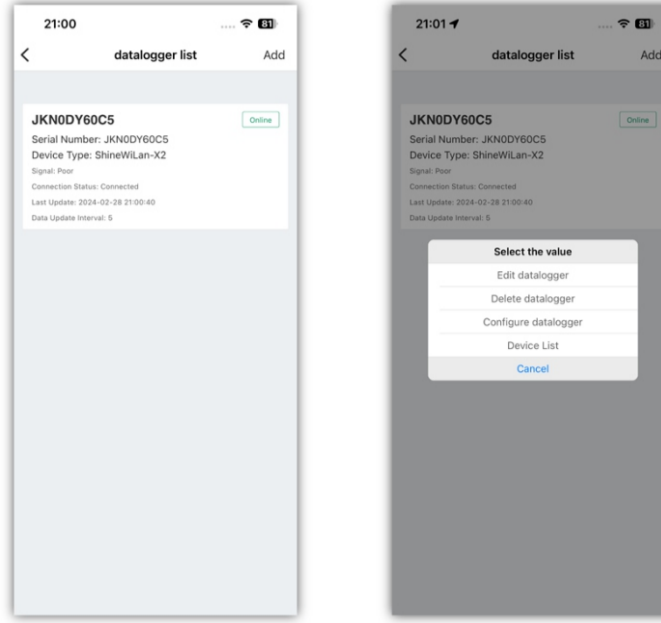
## 2. Connect via LAN



Select "LAN-Connect", then add the datalogger to the plant

## Step7. Check the datalogger status

1. Log in with your account, go to the "Plant" page and click the "+" icon to check the datalogger list
2. From there, you can edit, delete or configure the datalogger



**Note:** To monitor other devices with the datalogger, you need to remove it from the current account and then add it to the new account.

## Appendix I. Troubleshooting

### 1. Troubleshooting based on the indicator status

LED status	Indication	Troubleshooting
Steady green	ShineWiLan-X2 failed to connect to the router	<ol style="list-style-type: none"> <li>1. For Wi-Fi connection                             <ol style="list-style-type: none"> <li>(1) Check if you have entered the correct account name and password of the router during configuration</li> <li>(2) Check the router                                     <ol style="list-style-type: none"> <li>a) The router's name should be a combination of English letters and numbers; special symbols are not allowed: (""...€¥)</li> <li>b) For security reasons, please use the encrypted wireless network</li> <li>c) Networks that adopt secondary authentication are not currently supported</li> <li>d) Bridged wireless signal is not currently supported</li> </ol> </li> </ol> </li> <li>2. For LAN connection                             <ol style="list-style-type: none"> <li>(1) The Ethernet cable is not connected</li> <li>(2) Restart the router and make sure that the DHCP is enabled to assign IP addresses automatically</li> <li>(3) If the static IP address is adopted, please check if the network segments of the IP address is consistent with the router settings</li> </ol> </li> </ol>
Flashing blue	ShineWiLan-X2 communicates with the PV device, router and server properly	Operating properly
Steady blue	ShineWiLan-X2 is in Bluetooth mode	Bluetooth configuration mode. Please continue with the configuration process. If network configuration is not needed, you can press the button once to exit this mode

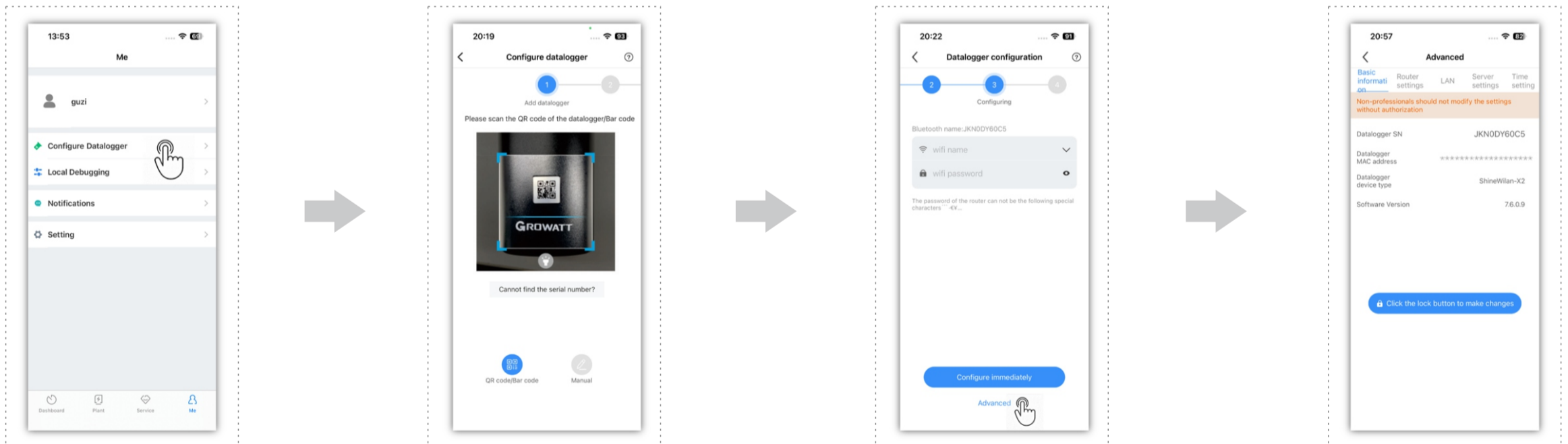
LED status	Indication	Troubleshooting
Flashing green	ShineWiLan-X2 has been connected to the router, but failed to connect to the server	<ol style="list-style-type: none"> <li>(1) Check if the router has access to the Internet</li> <li>(2) Check if the router is blocking the server and port number. ShineWiLan-X2 uses Port 7006.</li> </ol>
Off	ShineWiLan-X2 failed to communicate with the PV device	Check the USB port connection

### 2. ShineWiLan-X2 button description

Button operation	Description
When the ShineWiLan-X2 is working normally, short press the button (the indicator will turn steady blue)	Enter Bluetooth Mode
When the ShineWiLan-X2 is in Bluetooth Mode, short press the button (the indicator will exit the steady blue status)	Exit Bluetooth Mode
Press and hold the button for 6s until the white light is on	Reset the datalogger; restore to factory settings <ol style="list-style-type: none"> <li>(1) Dynamic IP by default</li> <li>(2) Reset items include transmission interval, router information, Bluetooth authorization information</li> <li>(3) Reset items exclude the Serial Number, domain name, IP address, port and re-transmission data</li> </ol>

## Appendix II. Advanced settings (for commissioning, professionals only)

### 1. Access the "Advanced settings" page



Tap "Configure Datalogger"

Select your target datalogger for Bluetooth connection

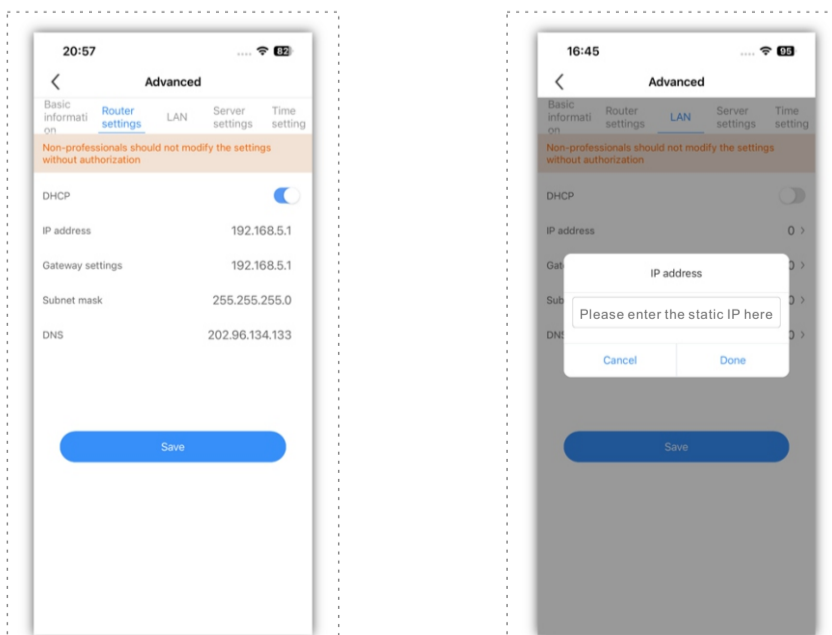
Access "Advanced settings"

Advanced settings page

Step 01: Tap "My" > "Configure Datalogger"  
 Step 02: Scan the QR code or manually enter the SN and the verification code  
**Note:** (1) Before configuring the datalogger, please ensure that you have enabled Bluetooth on your phone and the datalogger Bluetooth  
 (2) If the indicator on the datalogger is steady blue, it indicates that Bluetooth has been enabled. In case that Bluetooth is off, please short press the button to turn it on

On the "Datalogger configuration" page, tap "Advanced" at the bottom to access advanced settings  
**⚠ Notice:** Advance settings can only be operated by professionals. Otherwise, the datalogger might fail to work properly.

### 2. Static IP configuration

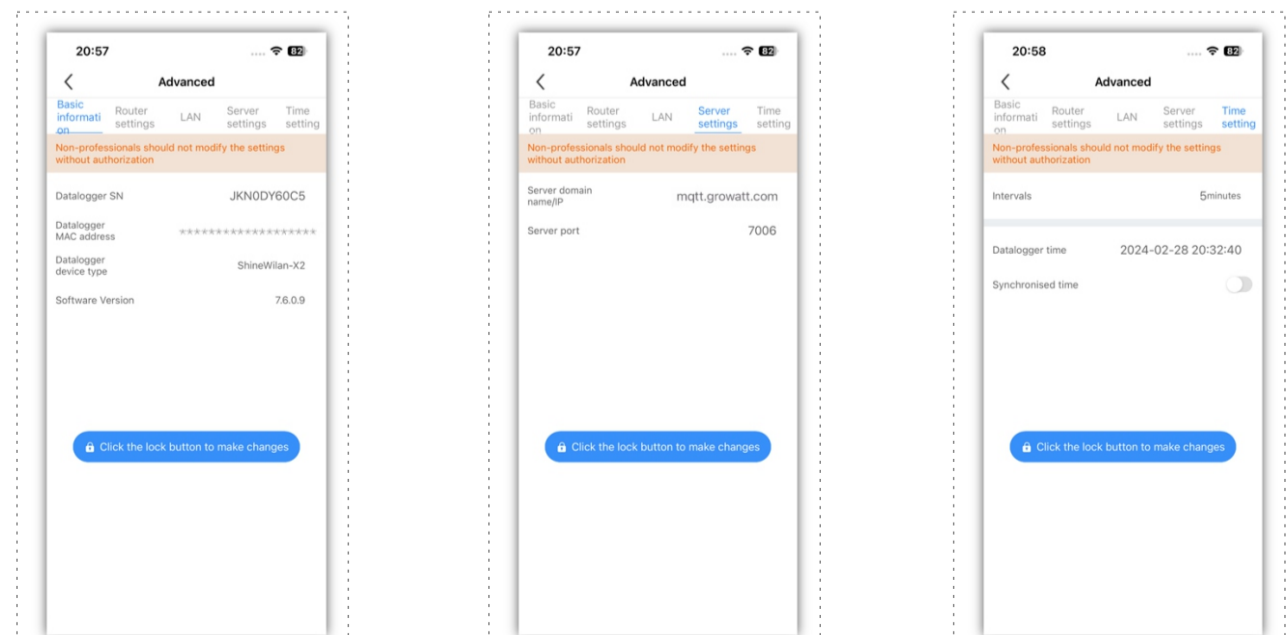


WiFi static IP configuration

LAN static IP configuration

**⚠ Note:** Only perform this step when you need to configure the static IP.  
 Step 01: Access WiFi configuration or LAN configuration page  
 Step 02: Disable DHCP  
 Step 03: Enter the target static IP, gateway, mask and DNS, then click "Save"

### 3. Parameter settings



Basic information page

Server configuration page

Time setting page

You can view information, including the datalogger's SN and version number

You can check the datalogger's server domain name, IP and network port

You can view the datalogger's sampling interval and the current time